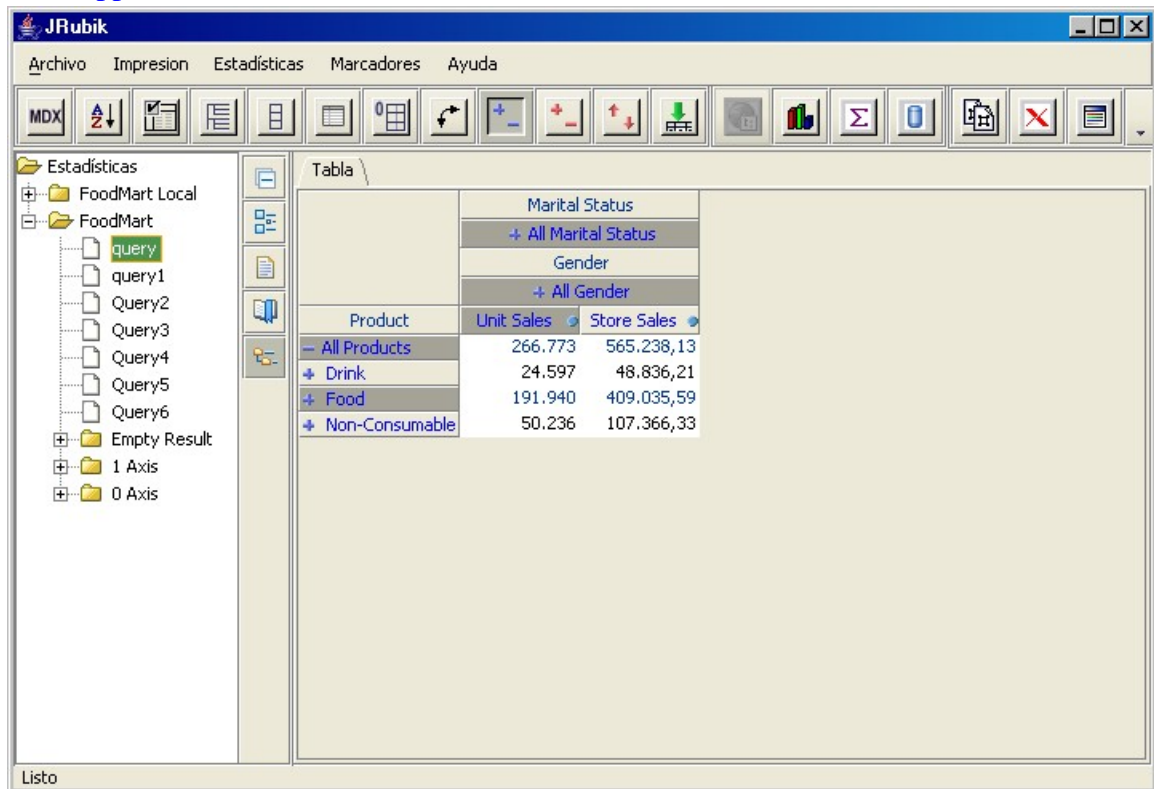


Screenshots

The above images are screenshots from the JRubik application.

- [Main application view](#)



The screenshot shows the JRubik application interface. On the left is a tree view under 'Estadísticas' containing 'FoodMart Local', 'FoodMart', and several queries. The main area displays a table titled 'Tabla' with columns for Product, Unit Sales, and Store Sales. The table data is as follows:

Product	Unit Sales	Store Sales
All Products	266.773	565.238,13
Drink	24.597	48.836,21
Food	191.940	409.035,59
Non-Consumable	50.236	107.366,33

Main application view

- [Chart component](#)

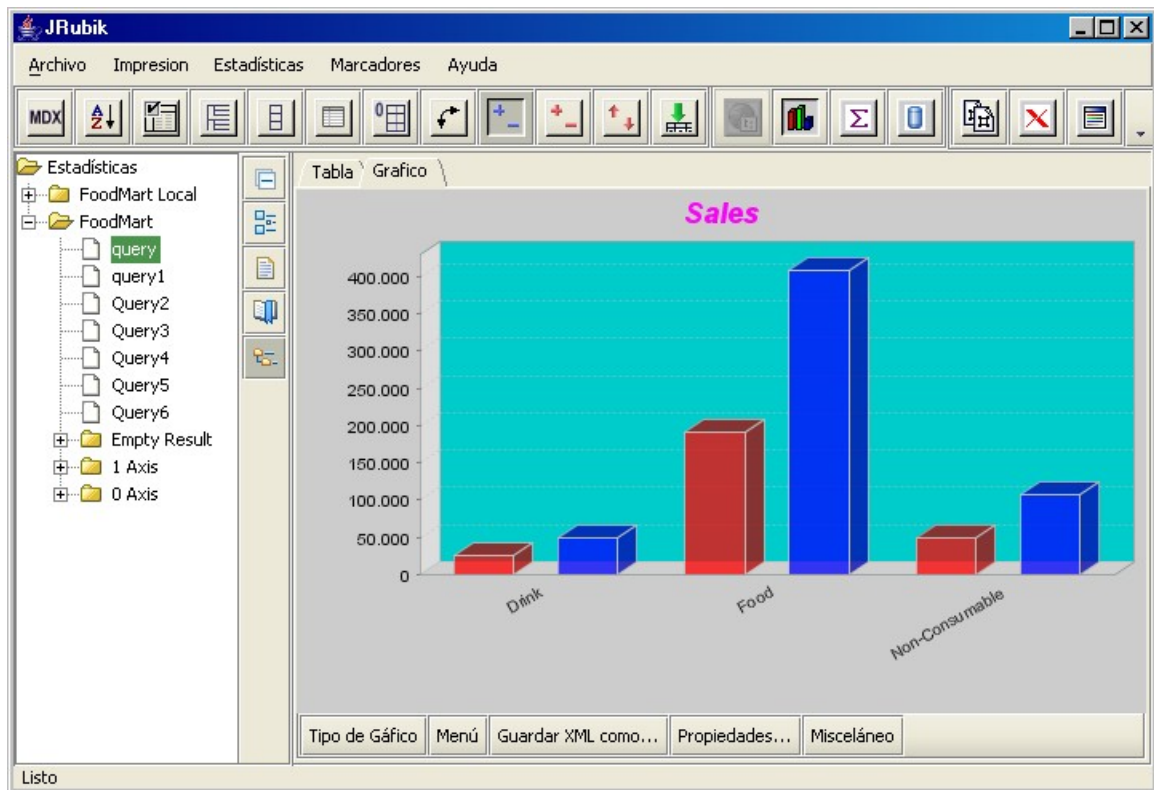
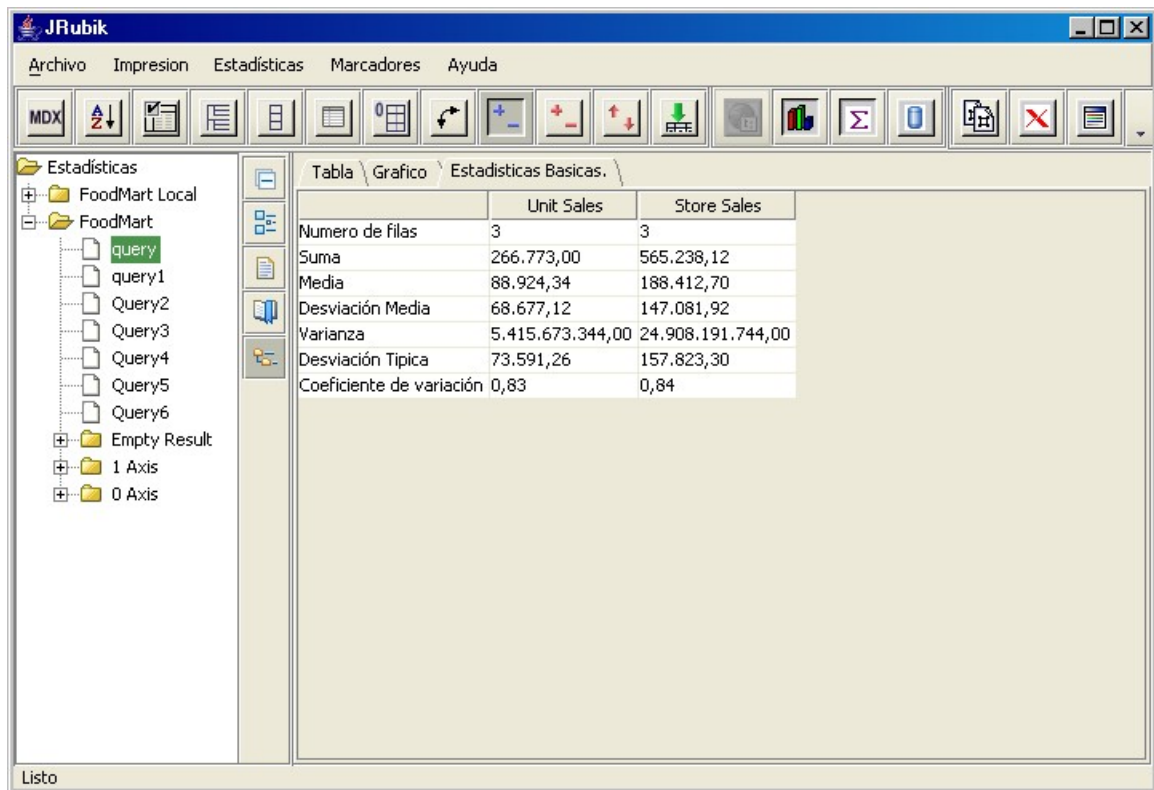


Chart component

- [Statistical summary](#)

Screenshots



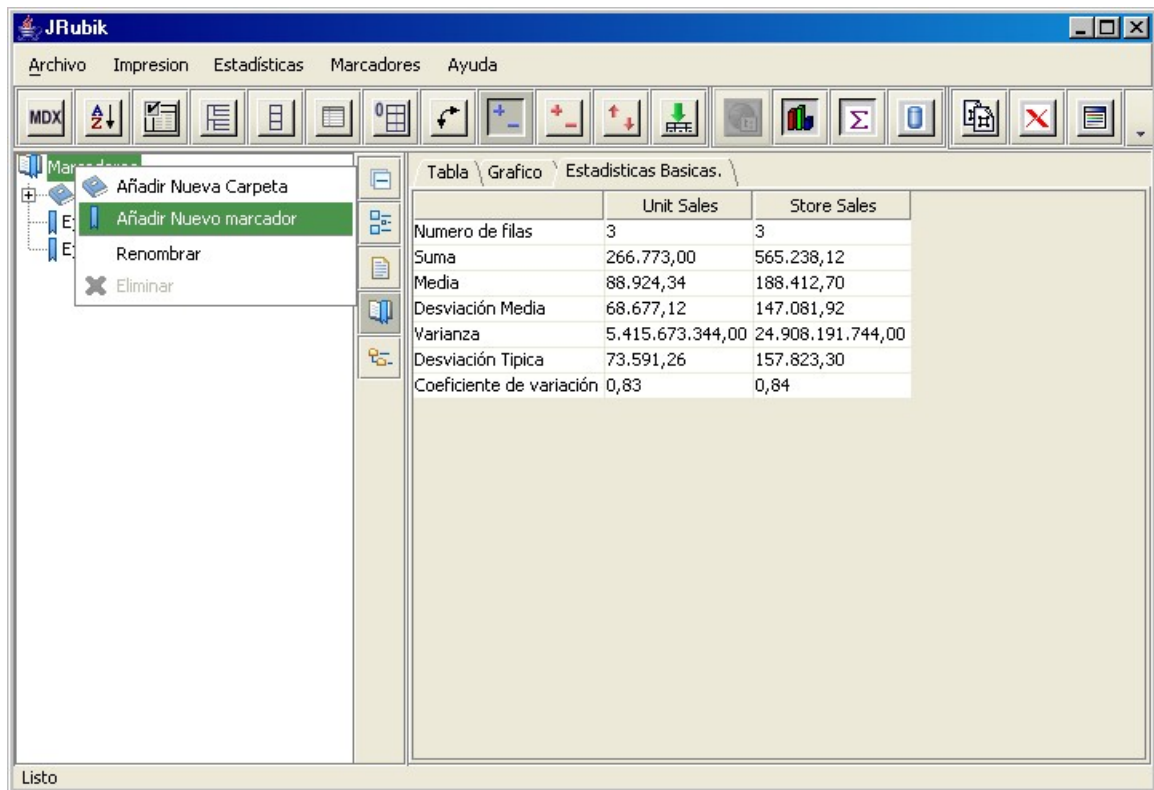
The screenshot shows the JRubik software interface. The menu bar includes 'Archivo', 'Impresion', 'Estadísticas', 'Marcadores', and 'Ayuda'. The toolbar contains various icons for file operations, calculations, and data visualization. The left sidebar shows a tree view with 'Estadísticas' expanded, containing 'FoodMart Local' and 'FoodMart'. Under 'FoodMart', there are several query files, with 'query' highlighted. The main window displays a table titled 'Tabla \ Grafico \ Estadísticas Basicas. \'. The table has three columns: 'Numero de filas', 'Unit Sales', and 'Store Sales'. The data rows are as follows:

	Unit Sales	Store Sales
Numero de filas	3	3
Suma	266.773,00	565.238,12
Media	88.924,34	188.412,70
Desviación Media	68.677,12	147.081,92
Varianza	5.415.673.344,00	24.908.191.744,00
Desviación Tipica	73.591,26	157.823,30
Coefficiente de variación	0,83	0,84

The status bar at the bottom left shows 'Listo'.

Statistical summary

- [Bookmarks](#)

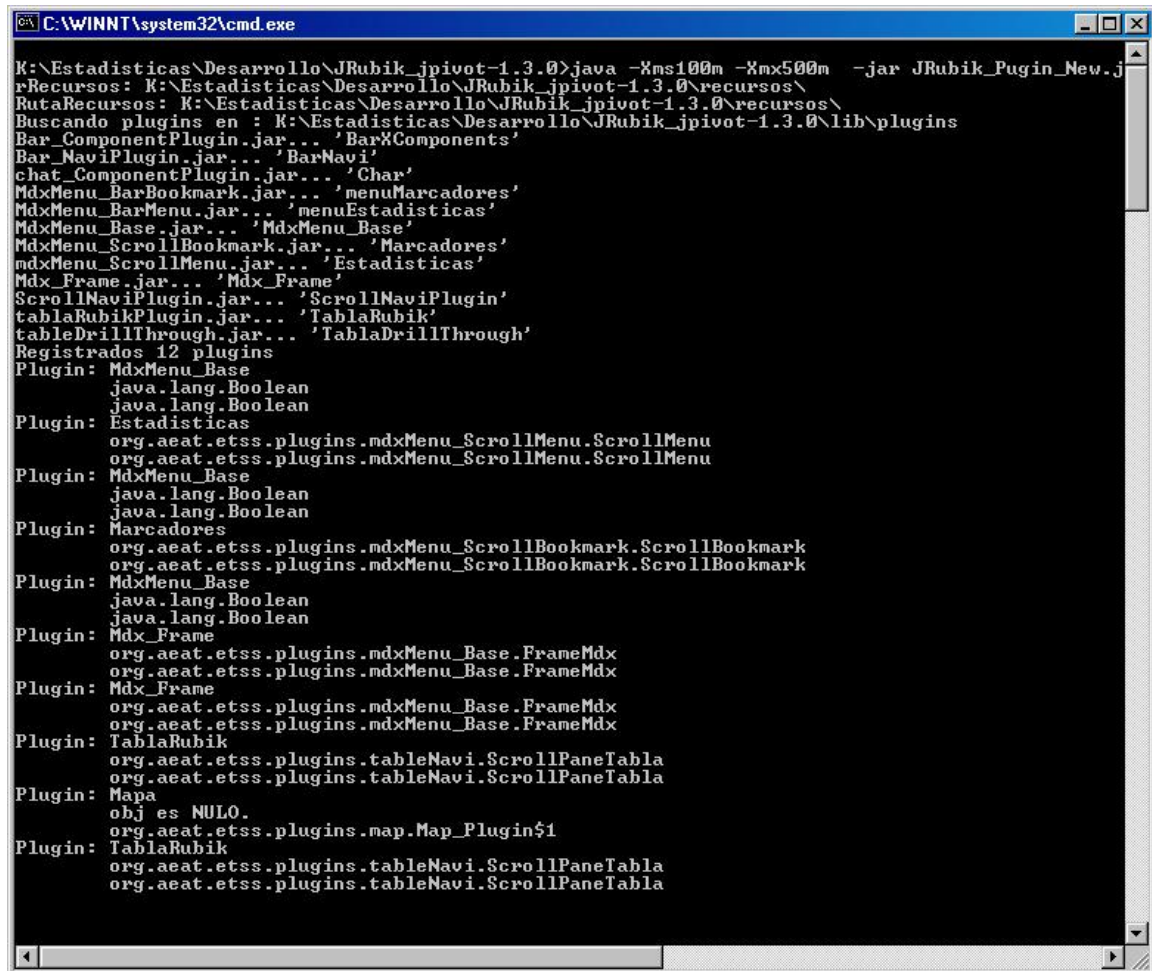


Bookmarks

- [Map component](#)
- [plugins load log](#)

Map component

Screenshots



```
C:\WINNT\system32\cmd.exe
K:\Estadisticas\Desarrollo\JRubik_jpivot-1.3.0>java -Xms100m -Xmx500m -jar JRubik_Pugin_New.j...
RutaRecursos: K:\Estadisticas\Desarrollo\JRubik_jpivot-1.3.0\recursos\
Buscando plugins en : K:\Estadisticas\Desarrollo\JRubik_jpivot-1.3.0\lib\plugins
Bar_ComponentPlugin.jar... 'BarXComponents'
Bar_NaviPlugin.jar... 'BarNavi'
chat_ComponentPlugin.jar... 'Char'
MdxMenu_BarBookmark.jar... 'menuMarcadores'
MdxMenu_BarMenu.jar... 'menuEstadisticas'
MdxMenu_Base.jar... 'MdxMenu_Base'
MdxMenu_ScrollBookmark.jar... 'Marcadores'
mdxMenu_ScrollMenu.jar... 'Estadisticas'
Mdx_Frame.jar... 'Mdx_Frame'
ScrollNaviPlugin.jar... 'ScrollNaviPlugin'
tablaRubikPlugin.jar... 'TablaRubik'
tableDrillThrough.jar... 'TablaDrillThrough'
Registrados 12 plugins
Plugin: MdxMenu_Base
      java.lang.Boolean
      java.lang.Boolean
Plugin: Estadisticas
      org.aeat.etss.plugins.mdxMenu_ScrollMenu.ScrollMenu
      org.aeat.etss.plugins.mdxMenu_ScrollMenu.ScrollMenu
Plugin: MdxMenu_Base
      java.lang.Boolean
      java.lang.Boolean
Plugin: Marcadores
      org.aeat.etss.plugins.mdxMenu_ScrollBookmark.ScrollBookmark
      org.aeat.etss.plugins.mdxMenu_ScrollBookmark.ScrollBookmark
Plugin: MdxMenu_Base
      java.lang.Boolean
      java.lang.Boolean
Plugin: Mdx_Frame
      org.aeat.etss.plugins.mdxMenu_Base.FrameMdx
      org.aeat.etss.plugins.mdxMenu_Base.FrameMdx
Plugin: Mdx_Frame
      org.aeat.etss.plugins.mdxMenu_Base.FrameMdx
      org.aeat.etss.plugins.mdxMenu_Base.FrameMdx
Plugin: TablaRubik
      org.aeat.etss.plugins.tableNavi.ScrollPaneTabla
      org.aeat.etss.plugins.tableNavi.ScrollPaneTabla
Plugin: Mapa
      obj es NULO.
      org.aeat.etss.plugins.map.Map_Plugin$1
Plugin: TablaRubik
      org.aeat.etss.plugins.tableNavi.ScrollPaneTabla
      org.aeat.etss.plugins.tableNavi.ScrollPaneTabla
```

plugins load log